



MIP480 Mobile Printer Flash Utility Operation Manual

Version 4.0

Last update Nov 2009

Dascom Europe GmbH

1. Operating Environment

- Windows XP/2000/Vista/Windows 7
- PC with Parallel ,USB or Serial Port.

2. Main functions of MIP480 Flash Utility

- Downloading Main Firmware¹, IPL² Firmware and CG³ Fonts to MIP480 printer through Parallel, USB, Serial Port.
- Assigning a BT Pin Key/Code, transferring a Bluetooth (BT) Printer Friendly name to the printer

3. Description of GUI of MIP480 Flash Utility

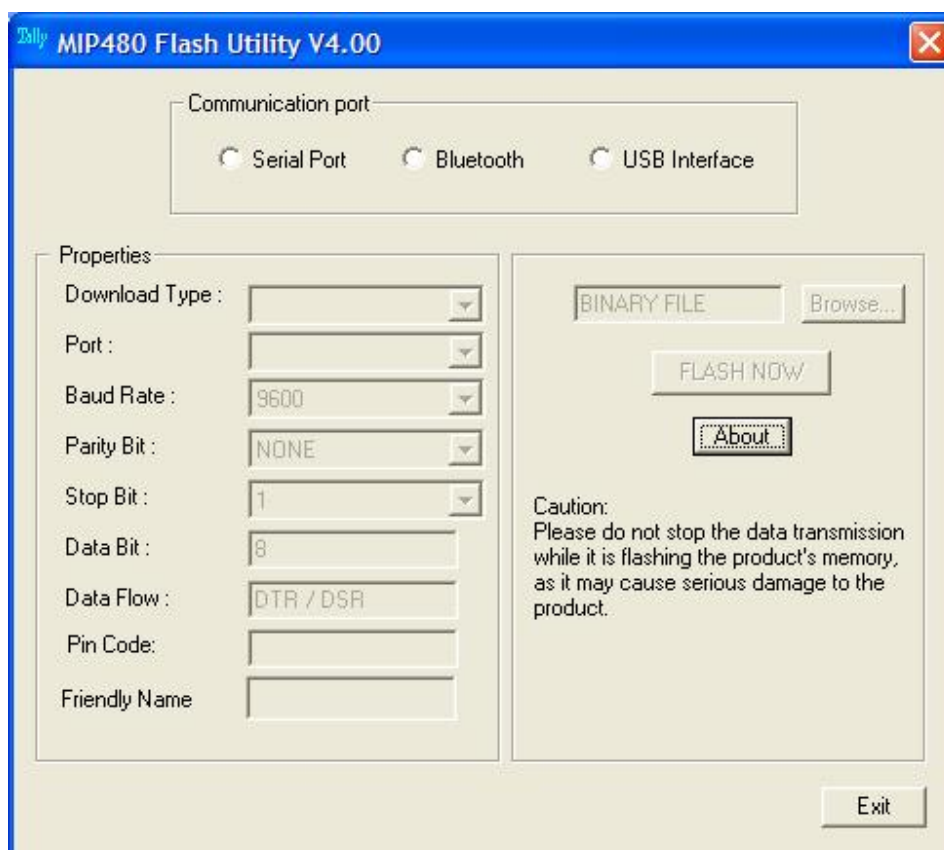


Figure 1 GUI of MIP480 Flash Utility

¹ Basic Firmware

² Boot Firmware

³ Character Set

Download Type

- Determine the download types of the program (Main Firmware), IPL Firmware or the type of CG Font. Further you can select Pin Code and Friendly Name

Port

- Determine the Parallel and Serial communication port, which is used for data transfer.

Baud rate

- Determine the baud rate of the serial communication transfer
- Disabled if parallel port is selected

Parity Bit

- Determine the parity bit of the serial communication transfer (No parity, Odd/Even Parity)
- Disabled if parallel port is selected

Stop Bit

- Specifies the number of stop bits to be used. (1 or 2)
- Disabled if parallel port is selected

Data Bit

- (Fixed) Specifies the number of bits in a byte to be sent and received, the value is set to be 8.
- Disabled if parallel port is selected

Data Flow

- Enables the DTR (Data Terminal Ready) line when the device is opened and leaves it on.
- The DSR (data-set-ready) signal is monitored for output flow control

Pin Code

- Choose an unique key (e.g. 1234 or !3Uu, or whatever)
Use this key to establish a pair wise connection to the host
- Pin code is mandatory with Microsoft /Intel BT stacks

Friendly Name

- Choose a name which easily can be remembered and describes the task of the printer
- Do this before you connect to the host

Browse

- Browses for the download file, which is going to be flashed into the printer. Prior to pressing this button, the download type must be selected first.

Flash Now

- Validate the download configuration and starts flashing.

4. Download Procedures

- Determine the communication type (Parallel/USB/Serial)
- Determine the program download type (Main Firmware, IPL Firmware , CG Fonts)
- Select the corresponding binary file by pressing the “Browse” button.
- If serial port is selected, select the communication port, required baud rate, parity bit and stop bit.
- Starts flashing by pressing the “Flash Now” button.
- A “Download successfully completed” dialog box will pop up after finished flashing.

5. Remarks

- Ensure that there are no installed printers in the PC/Laptop shares the same COM Port and LPT Port with the flash utility.
- We recommend using the USB Port as it is standard.
- How to enter IPL Mode
There are two methods to download ROM. By pressing keys and by Command.
 - by keys
Press and hold down the “Load/FF” + “Park” + “Alt” + “Ready/Clear” keys at POC⁴ to go into IPL mode, IPL mode performs downloading F/W and CG to the printer from the Host.
 - by command
Printer Power On, then Insert Paper (I/F Set to Ready).
- Attention when you use Serial I/F by switch
When you perform a download by switch, please set Baud rate in 38400bps, Parity None, Data 8bit, Stop Bit 1.
When you perform a download by command, please match it with setting of Setup.

⁴ POC = Power On condition, Switching printer ON