

>> **Compact printer for general purpose and specific applications**

FULL ARABIC SUPPORT PRINTERS



impact 1180

Globalis Impact 1180 comes in a compact design and prints up to 500 characters per second at very low noise level.

The flatbed printer is ideal for business applications as well as industrial environment offering an all-in-one solution for transactional single sheet applications as well as continuous form printers with outstanding multi-copy capability.

KEY FEATURES

- Print speed up to 500 cps
- Print head life of 300 million strokes per wire
- Up to 7 copies
- 24-needle print head with 5 million draft characters life
- Up to 128 Kb input buffer
- 8 barcode types
- Flexible, intelligent printer that can be used for all business applications
- Bi-directional printing with logic seeking
- Standard Parallel, LAN or USB interface
- Suitable for transaction applications
- Available with built-in Arabization for full Arabic standard support

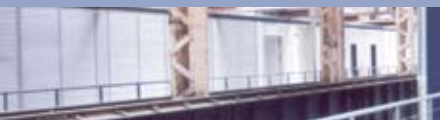
Flexible paper handling

Great paper handling ability with a capacity to print continuous forms up to 7 copies including the originals. The 1180 features flexible and configurable paper handling to facilitate paper manipulation in transactional environment. It offers also a reliable support of continuous forms. The printer can print on a variety of papers, envelopes, postcard, adhesive strips and multiple copy forms.

The printer comes with a parallel interface and can be equipped with an optional serial or USB interface. It integrates popular emulations to support a variety of environments.

Outstanding performance

The Impact 1180 printer is designed to offer the best print techniques for a good quality output at a minimum cost. It delivers the same quality output on single sheets as on multiple copy forms up to 1+6 copies.



Technical Specifications

impact 1180 

Print Technology	24-pin, serial impact dot matrix	Bi-Directional with logic seeking
Print speed	<div> <div>Max</div> <div>HSD</div> <div>Draft</div> <div>LQ</div> </div> <div>500 cps</div> <div>12 cpi</div> <div>10 cpi</div>	<div>230 cps</div> <div>115 cps</div> <div>96 cps</div>
Character sets	Host code sets: ASMO-449/449+, ASMO-708/708+, ARCII, ASCII, DEC/8/ASMO, Al-Arabi, IBM APC, XBASIC, CODAR-UFD, ICL CODAR, ICL ASMO-708, Cross Range, NCR 64/96, Data General, HP Arabic-8, HP Enhanced, Comterm 341/348/541, Integro 708 UNIX, ASMO/French, French/ASMO, User-defined PC code sets: ADOS-708/709/710/711/720/128 864/96, Mussaed Arabi, Arabic Windows 1256, IBM437, IBM851, IBM864	
Operating mode support	8-bit Arabic with neutrals, GLCCs, & GLCCs balancing 7-bit Arabic with GLCCs, GLCCs balancing & escape sequences	
Arabic fonts	Naskh Draft, Naskh NLQ	
Latin fonts	Draft, Courier, Prestige, Roman, Sans Serif, OCR-A, OCR-B	
Bar codes	8 types including EAN-13, Code 39, Code 128 etc	
Print characteristics	Width: Cut sheet: 50-298 mm Continuous paper: 50-300 mm Length: Cut sheet: Min 52 mm, Continuous Paper: Min 52mm Thickness: 0.06 to 0.09mm, Adaptive paper thickness	
Number of copies	Original + 6 copies	
Number of columns	110 col.	
Paper insertion	Cut sheet: Front in/Front out Front in/Rear out Continuous: Rear in/Front out	
Emulations	Epson ESC P, OKI	
Interface and connectivity	Parallel interface (standard) Optional: Serial, USB or Integrated Ethernet LAN 10/100 Base T	
Input data buffer	128 Kb	
Consumables	Type: Black ribbon cartridge Life: 8 million characters	
Print head life	300 million strokes per wire	
MTBF	10,000 hours	
Physical	Dimensions (w x d x h): 475 x 350 x 215 mm Weight: 9 kg	
Operating environment	Temperature: Operating: 5° to 35° C; Storage: -20° to 60°; Humidity: 20% to 80% (operating); Consumptions: 12W to 47W; Acoustics: 58 dBA; Voltage: 220V, 165 to 264 VAC; Frequency: 49.5 to 60 Hz	
Warranty	Standard one-year	



HEADQUARTERS:

Globalis International, Montreal, Canada
 info@globalis.com | www.globalis.com

REGIONAL HEADQUARTERS:

Alistech Trading LLC, Dubai, UAE
 info@alistech.ae | www.alistech.ae