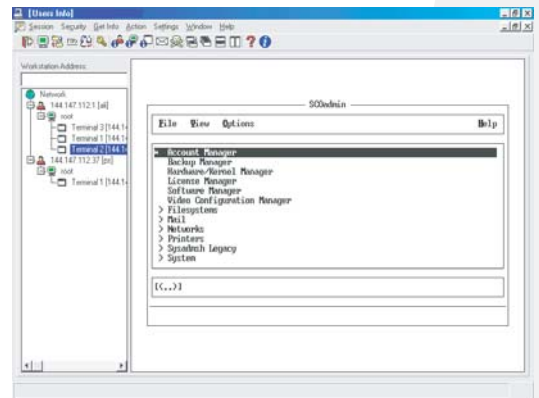


Bilingual Terminal Emulation System

As-Sabil

As-Sabil communication program enables unilingual multi-user systems to become truly bilingual in handling both Arabic and Latin texts with ultimate transparency and full Windows compatibility. Featuring complete arabized sessions, full connectivity tools, and a variety of convenient functions, As-Sabil offers the user all the flexibility and support expected from Globalis products.



FUNCTIONAL

- Supports IBM PC's and compatibles in all Windows environments (with or without Arabic support)
- Supports serial and TCP/IP communication protocols
- Offers full emulation of ANSI, DG-ANSI, HP700 and VT-52/100/220/320/420/520 terminals
- Operates in 7-bit or 8-bit mode
- Provides popular file transfer protocols such as ASCII, FTP & X/Y/Z modems, with code set conversion capabilities
- Works on a variety of servers such as UNIX, FTP, VMS & HP700

PRACTICAL

- Language handling is totally transparent to the application software
- Features simple "drag and drop" functions to transfer files using FTP file transfer protocols
- Provides a variety of time-saving communication functions
- Offers several optional automatic functions for flexibility in application execution
- Includes many formatting and editing tools to customize applications

Complete Arabized Sessions ...

As-Sabil terminal emulation system provides full Arabic and Latin transparent text handling that enables the user to work in a truly bilingual system. It provides ultimate control over various Arabization parameters, as well as complete support for all Arabization standards in Windows environments, and full compatibility to all Globalis printing and software solutions. This system handles the complex features of the Arabic language, providing more than 30 Arabic code pages and an extensive range of character sets and diacritics. With As-Sabil terminal emulator the user can easily create custom code pages and display Arabic and Latin data simultaneously without modifying the software being used.

Arabic host code sets	Arabic DOS 710/720 ARCII, ASMO-449, 449/PLUS, ASMO-708, 708/PLUS, DEC/8/ASMO, Ameer, Aptec, Arabic Transparent, Arabic Windows, HPArabic 8, Mussaed Al-Arabi 2, Beehive, CODAR-UF D, EBCDIC , Emulog, French-1/Asmo 708, Data General, NCR 96, NCR ASMO-708, Comterm 341/541 IBM AS400, IBM NLS, Nafitha Enhanced, Nafitha International, Sakhr, XBasic, Unisys Arabic 20 ISO, Zentec, user-defined
Operating mode support	8-bit Arabic with neutrals, with GLCCs, with GLCCs balancing 7-bit Arabic with GLCCs, with GLCCs balancing, user-defined
Emulation	ANSI, DG-ANSI, D200, D211, GENERIC TTY, HP700, VT52/100/220/320/420/520/80/132column display (with user-defined width and height); Complete character attribute support and scrolling regions; VT-series text printing functions; Printer controller mode; Scroll back buffer; PreExec and PostExit functions
Network connectivity	Simultaneous use of TCP/IP and serial communications; Supports Windows XP/2000/98/95/NT TCP/IP stacks & third party 16-bit & 32-bit windows socket compliant TCP/IP stacks Supports both Telnet & bgin protocols; Direct & serial dialup modem connections (up to 57600); Connection directory including phone settings and automatic dialup access
File transfer	Supports ASCII, KERMIT, X/Y/Z modems, FTP Drag & drop or command mode FTP interface Integrated or standalone FTP client On-the-fly conversion of data during ASCII file transfer
Keyboard	Graphical re-mapping of any PC key to any VT-terminal key Power user keyboard editing facility Support of numeric and application keypad Support for user-defined meta-keys Column display includes 80/132/160 columns per line Row language definition available
Edit control	Cut, copy, append, & paste operations to/from Windows clipboard, to/from As-Sabil integrated clipboard editor or to/from an external file; Block or Line selection modes; Automatic internal code page conversion in editing operations; Capture/ Playback of incoming or outgoing data; Dump screen contents to a printer or a text/image file, or e-mail screen contents using any MAPI compliant system
Printing	True type font support Supports both slave and network (LPD) Arabized printing along with LPR Supports multiple print queues definition for each printer Complete control over printing attributes such as layout, orientation etc... Control for font size in cpi, points or automatic Full support for Alis printing ESC sequences
Output format	Attributes include: normal, bold, blink, and underline User-defined screen color mapping Fixed True Type Arabic & Latin fonts
Security	Control & monitor As-Sabil users Password verification for users Supervisor/user privilege definition Mail messages to As-Sabil users True MDI (Multiple Document Interface) Host control capabilities for remote initiation of PC operations

For more information:

Head office	100 Alexis Nihon Blvd., Suite 405, Montreal, Quebec, Canada H4M 2N9 Tel.: (514) 855-4994 Fax: (514) 855-0541 info@globalis.com
Gulf, Iran & Pakistan	Al-Khaleej Bldg., Office 307, Zabeel Road P.O. Box: 52460, Dubai, U.A.E. Tel.: (971-4) 334-6700 Fax: (971-4) 334-6912 info-dubai@globalis.com
Levant & Maghreb	Garden Tower, Office 9A Antelias, Beirut, Lebanon Tel.: (961-4) 414-248 Fax: (961-4) 414-842 info-beirut@globalis.com info-maghreb@globalis.com
Egypt	3 Mohamed Abdel Salam Street, off Abdel Aziz Fahmy, 1st Floor, Apt. 2 Heliopolis, Cairo, Egypt Tel.: (20-12) 780-0613/14 Fax: (20-2) 2638-4850 info-egypt@globalis.com
Saudi Arabia	Al Takhassousy St. Riyadh, Saudi Arabia Tel.: (966-55) 377-6788 Fax: (971-4) 334-6912 info-saudi@globalis.com



www.globalis.com